



Received on 01 March 2018; received in revised form, 16 April 2018; accepted, 17 June 2018; published 01 July 2018

## PHARMACOGNOSTICAL STANDARDIZATION ON THE ROOTS OF AGNIMANTHA - *PREMNA SERRATIFOLIA* LINN.

M. Prathapa Reddy\*, T. R. Shantha, V. Rama Rao, N. Shiddamallayya and Amit Kumar Dixit

Drug Standardization Research Unit, Regional Ayurveda Research Institute for Metabolic Disorders, (CCRAS, Ministry of Ayush, Government of India), Ashoka Pillar, Jayanagar, Bangalore - 560011, Karnataka, India.

### Keywords:

Agnimantha, *Premna serratifolia*, *Premna integrifolia*, Pharmacognosy, Root, Physicochemical

### Correspondence to Author:

M. Prathapa Reddy

Research Assistant,  
Regional Ayurveda Research  
Institute for Metabolic Disorders,  
(CCRAS, Ministry of Ayush,  
Government of India), Ashoka  
Pillar, Jayanagar, Bangalore - 560011,  
Karnataka, India.

E-mail: prathapanadri@gmail.com

**ABSTRACT:** Present communication deals with the pharmacognostical standardization on the roots of *Agnimantha* (*Premna serratifolia* L. (syn. *P. integrifolia* L.) belong to the family Verbenaceae. It is an important medicinal plant used in many Ayurvedic formulations. According to Ayurveda the roots and leaves are the most useful parts of the plant. It is one among the *Dashamula*. Macro, microscopical and physicochemical studies were carried out as per the latest Ayurvedic Pharmacopoeia of India, part-1, volume-8 protocols to establish its Pharmacognostical standards. Studies revealed the presence of abundant, simple to compound starch grains with prominent hilum in the center, cork cells filled with yellowish brown pigmented cells, starch grains in the medullary rays, abundant xylem vessels with bordered pits and tracheids with pits, prism-shaped crystals in the cortex region. Phytochemical studies showed the presence of carbohydrates, alkaloids, phenols, tannins, etc.

**INTRODUCTION:** Agnimantha a sanskrit name equivalent to *Premna serratifolia* Linn. (Synonym *P. integrifolia* Linn.) is a large, thorny deciduous shrub or a tree, up to 9 m in height, common along the Indian and the Andamans coasts, it also occurs in the plains of Assam and Khasi hills. In Ayurveda, the roots and leaves are the most used parts for many ailments. The roots are considered as an astringent, stimulant, liver tonic, laxative, carminative and antibacterial. Leaves infusion with pepper is useful in cold and fever; leaf sap is useful to alleviate headache<sup>1,2</sup>.

Roots are useful in vitiated conditions of *vata*, *kapha*, neuralgia, inflammations, cardiac disorders, cough, asthma, bronchitis, leprosy, skin disorders, dyspepsia, flatulence, constipation, fever, diabetes and anorexia etc.<sup>3</sup> In Vietnamese traditional medicine, the leaves of *S. chinensis* are used to treat indigestion, dysuria, and dysentery; roots against indigestion, stomach ache and fever<sup>4</sup>. The root methanolic extract showed better immunomodulatory activity in experimental mice<sup>5</sup>. A paste of its roots with water and butterfat is given in Urticaria<sup>6</sup>.

**Ayurvedic Description of Properties:** In terms of Rsasapanchaka theory of Ayurveda, the properties are as follows: Rasa (taste) - Tikta (bitter), kaṭu (pungent), kaṣāya (astringent); Guṇa (quality) - Rūkṣa (creates dryness), laghu (light for digestion); Vīrya (potency) - Uṣṇa (Hot in potency); Vipāka (digestive effect) - Kaṭu (pungent); Karma (action)

	<p>QUICK RESPONSE CODE</p>
	<p>DOI: 10.13040/IJPSR.0975-8232.IJP.5(7).426-30</p>
<p>The article can be accessed online on <a href="http://www.ijpjournal.com">www.ijpjournal.com</a></p>	
<p>DOI link: <a href="http://dx.doi.org/10.13040/IJPSR.0975-8232.IJP.5(7).426-30">http://dx.doi.org/10.13040/IJPSR.0975-8232.IJP.5(7).426-30</a></p>	

- śothahara (Anti-inflammatory), vedanāsthāpana (anodyne or which relieves pain); Doṣaghnatā (effect on doshas) - Kapha-vātahara (Acts against the diseases came due to *Kapha dosha* and *Vata dosha*)<sup>7</sup>.

As per the 3 volumes of Ayurvedic Formulary of India, more than 40 formulations has been prepared by using Agnimantha as one of the ingredient, some of them are as follows: *Amrtarista, Dantyadyarista, Dasamularista, Agastya Haritaki Rasayana, Cyavanaprasa, Brahma Rasayana, Bharnigiguda, Dasamula Katutranyakavthacurna, Dasamulakvathacurna, Dasamulapancakoladikavthacurna, Darunagaradikavthacurna, Rasnadikavthacurna, Saptasarakavthacurna, Indukanta Ghrta, Dasamulaghrta, Dasamulasaptalakaghrta, Dadhikaghrta, Dhanvantaraghrta, Mahapancagavyaghrta, Lasunadighrta, Sukumaraghrta, Dhanvantarataila, Narayanataila, Prabhanjana Vimardhanataila, Brha-tmasataila, Mahanarayanataila, Mahavisagarbhataila, Sahacaraditaila*<sup>8</sup>; *Brhacchagaladyaghrta, Guducy-aditaila, Dasamulataila, Madhyama Narayanataila, Musikadyataila, Vajrakapata rasa, Vatagankusa rasa, Sirahsuladivajra rasa*<sup>9</sup>; *Nalikerasava, Dasamularka, Vasisthaharita-kyavaleha, Caturda-sanga-kvathacurna, Tagaradikvathacurna, Bhunimbadi Astadasangakavthacurna, Viratarvadiganakavtha-curna etc*<sup>10</sup>.

**Chemical Constituents:** Premnacorymboside A, scutellarioside II, quercetin-3-rutinoside, leonurioside A were isolated from the stem bark<sup>4</sup>. Alkaloid contents like premnine, ganikarine, premnazole are reported in root from different researchers<sup>5</sup>. 1β, 3α, 8β-trihydroxy-pimara-15-ene; 6α, 11, 12, 16-tetrahydroxy-7-oxo-abieta-8, 1, 13-triene; 2α, 19-dihydroxypri-mara-7, 15-diene were identified in root bark<sup>11</sup>. It is known as follows in different Regional languages in India.

- **Sanskrit:** Agnimantha, Ganiparnika, Jjaya, Vaijayanti, Arani
- **Bengali:** Bhut-bhiravi
- **Gujarathi:** Mothi-arni
- **Hindi:** Agetha
- **Kannada:** Agnimanda, Eegigida
- **Malayalam:** Munna
- **Tamil:** Munnay

- **Telugu:** Pomantai, Peddanarva, Gaebunelli;
- **Urdu:** Arani<sup>1</sup>.

**MATERIALS AND METHODS:** The roots of Agnimantha were collected from Budnal village, Huballi taluk, Dharwad district, Karnataka, authenticated by Survey of medicinal plant unit, Regional Ayurveda Research Institute for Metabolic Disorders, Bangalore. The roots were shade dried; some are pulverized by a mechanical grinder to get the coarse powder and stored in a closed vessel, to carry out microscopical studies, powder studies, physicochemical and preliminary phytochemical analysis as per the standard protocols. Macroscopical, microscopical and powder studies were carried out as per the standard procedures<sup>12, 13</sup>.

**Hydro-Alcoholic Extract:** 100 g of coarse powder was taken in an extractor and mixed with 50% aqueous alcohol, thrice the quantity of raw material and refluxed for 3 - 4 h. The extract was filtered through a Whatman no.1 filter paper. The process was repeated three times, and each time the extract was filtered into the same vessel. The combined filtrates were concentrated to a syrupy consistency and dried by using a rotary evaporator<sup>14</sup>.

**Water Extract:** 100 g of coarse powder was taken in an extractor and was added with thrice quantity of distilled water and heated at a temperature 80 °C for 3-4 h. The extract was filtered through a Whatman no. 1 filter paper. The process was repeated three times, and each time the extract was filtered into the same vessel. The combined filtrates were concentrated to a syrupy consistency and dried using a rotary evaporator<sup>14</sup>.

**Thin Layer Chromatography:** Shade dried roots coarse powder was extracted with methanol, water-alcohol, and water by reflux method. TLC studies of these extracts were carried out by using, commercially available pre-coated plates at room temperature by following standard procedures<sup>14</sup>.

**Physicochemical Analysis:** The powdered drug was used to carry out various physicochemical parameters such as total ash, acid-insoluble ash, loss on drying at 105 °C, water soluble and alcohol soluble extractive values. The water and water-alcoholic extracts were dried and subjected to

various tests like total ash, acid-insoluble ash, pH of aqueous solution and total soluble solids as per the latest Ayurvedic Pharmacopoeia of India protocols<sup>14</sup>.

**Preliminary Phytochemical Analysis:** The powdered drug was extracted with water, alcohol and petroleum ether and methanol for carrying out different preliminary phytochemical tests for alkaloids, carbohydrates, proteins, phenols, tannins, saponins, starch, flavonoids, and steroids, etc. by using Standard testing protocols<sup>15, 16</sup>.

## RESULTS AND DISCUSSION:

**Macroscopic Characteristics:** Roots light brown or yellowish brown, woody, 6 - 8 cm long and 4 - 5 mm in diameter, brown from outside and yellow from within, having a short fracture. Roots contain yellow pigment tannin. Roots are light brown, woody, branched and cylindrical. The outer surface is exfoliated at some places and shows longitudinal striations and wrinkles. Roots possess bland taste and are slightly aromatic, woody, branched and

tortuous to cylindrical. The surface gets exfoliated easily and shows prominent longitudinal striations and wrinkles **Fig. 1** and **2**.

**Microscopic Characteristics:** The transverse section shows cork, consisting of 8-10 rows of tangentially elongated and radially arranged suberised cells. Cork is followed by cortex made up of 10-15 layers of thin-walled parenchymatous cells, closely arranged with little intercellular spaces. Cortex shows two to three discontinuous layers of stone cell that are thick-walled, lignified and lodged with prisms of calcium oxalate. A few cortical cells contain yellowish brown pigment.

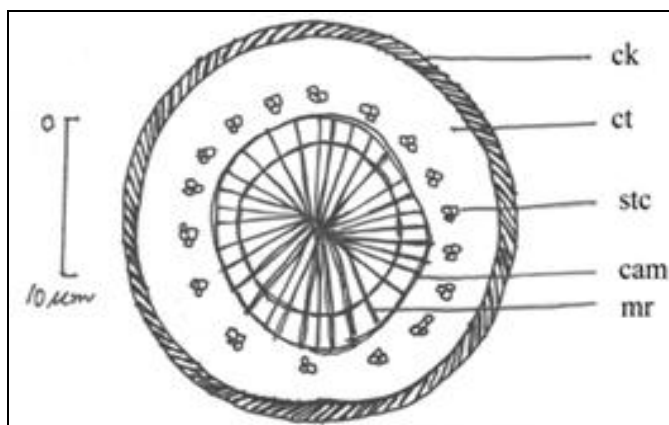
Phloem shows thin-walled cells, and in between the phloem cells, stone cells with prisms of calcium oxalate crystals are present. The xylem vessels are of varying size, lignified, found isolated or in the group of 2 - 3. Medullary rays are 2 - 3 seriate and the cells are pitted and lignified. Starch is present in the medullary ray cells **Fig. 3**.



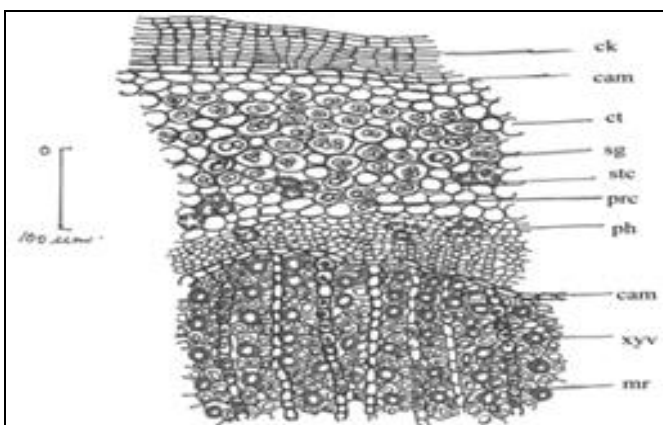
FIG. 1: LIVE PLANT



FIG. 2: DRIED ROOT PIECES



T. S. OF ROOT (DIAGRAMMATIC)



T. S. OF ROOT

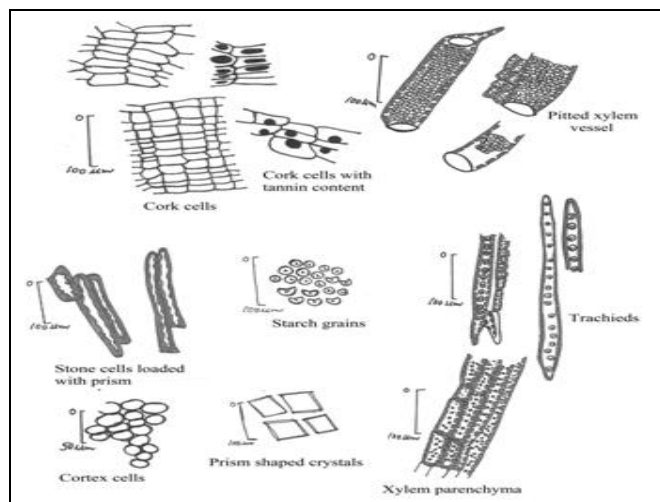
**FIG. 3: MICROSCOPY OF PREMNA SERRATIFOLIA LINN.** Ck: cork, Cam: cambium, ct: cortex, mr: medullary ray, ph: phloem, prc: prismatic crystal of calcium oxalate, stc: stone cell, sg: starch grains, xyv: xylem vessel.



**Powder Microscopy:** Powdered root is light brown, with a slightly aromatic and bland taste. Starch is abundant, simple, spherical and cup-shaped. Stone cells are rectangular to oblong and lodged/ loaded with 3 - 8 prisms of calcium oxalate which are found scattered also. The vessels and fibers of the xylem are lignified and found in the groups of interlocking cells. The xylem vessels show bordered pitted thickenings **Fig. 4**.

#### Diagnostic Characters:

- Presence of abundant starch grains in the cortex region.
- Presence of prism-shaped crystals and stone cells in the cortex region.
- Presence of yellowish brown pigmented cells in the cork region.
- Presence of starch grains in the medullary ray cells.
- Presence of abundant xylem vessels with bordered pits.



**FIG. 4: POWDER STUDY OF P. SERRATIFOLIA L.**

**Physicochemical Analysis:** Physicochemical parameters such as total ash, acid-insoluble ash, loss on drying at 105 °C, water soluble and water-alcohol soluble extractive values were carried out, and results were given in **Table 1**.

The water and water-alcoholic extracts were dried and subjected to various tests like total ash, acid-insoluble ash, pH of aqueous solution and total soluble solids as per the latest Ayurvedic Pharmacopoeia of India protocols and results were given in **Table 2**.

**TABLE 1: PHYSICOCHEMICAL PARAMETERS P. INTEGRIFOLIA LINN. ROOT POWDER**

Name of the parameter	Values (%) w/w
Description	Light brown coarse powder
Loss on drying at 105 °C	6.23
Total ash	10.18
Acid-insoluble ash	1.25
Water-soluble extractive	15.79
Alcohol-soluble extractive	6.05
Water-Alcohol (50:50) soluble extractive	9.86

**TABLE 2: PHYSICOCHEMICAL PARAMETERS OF P. SERRATIFOLIA L. ROOT POWDER EXTRACTS**

Name of the parameter	Values (%) w/w	
	Hydro-alcoholic extract	Water extract
pH (5 % w/v aq. solution)	5.05	4.85
Loss on drying at 105 °C	9.38	10.86
Total ash	5.97	13.28
Acid-insoluble ash	0.25	0.20
Total soluble solids	95.39	92.93

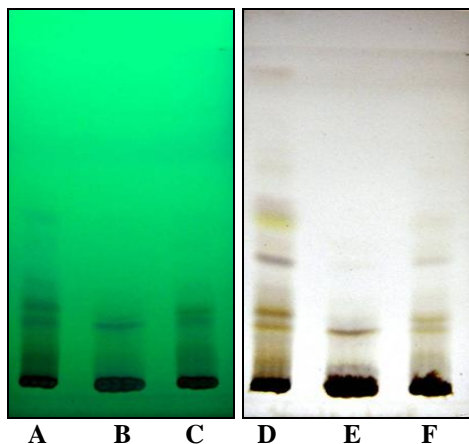
**Pre-liminary Phytochemical Analysis:** Preliminary phytochemical analysis has been carried out for alkaloids, carbohydrates, proteins, phenols, tannins, saponins, starch, flavonoids and steroids, etc and the results were given in **Table 3**.

**TABLE 3: PRELIMINARY PHYTOCHEMICAL TESTS FOR DIFFERENT EXTRACTS OF P. SERRATIFOLIA L. ROOT**

Natural product group	Test for natural products	Presence (+) / Absence (-)	
Alkaloids	Dragendorff's test	+	
	Hager's test	+	
	Mayers's test	+	
	Wagner's test	+	
	Anthrone test	++	
Carbohydrates	Benedict's test	++	
	Fehling's test	++	
	Molisch's test	++	
	Flavonoids	-	+
	Phenols	Ferric chloride test	+
Lead acetate test		+	
Proteins	Biuret's test	+	
	Millon's test	+	
Saponins	-	+	
Steroids	Salkowski reaction	-	
Tannins	Ferric chloride test	+	
	Lead acetate test	+	

**Thin Layer Chromatography:** Thin Layer Chromatography was carried out on a precoated silica gel 60<sub>254</sub> plates. Few drops of test solution applied on a TLC plate as a band. Developed the plate to a distance of 8 cm from the line of the application by using hexane: ethyl formate (8:2) as mobile phase (solvent system). Dried the plate in air and examined under 254 nm, recorded the R<sub>f</sub> values. Sprayed the TLC plate with 10% sulphuric acid reagent. Heated the plate at 110 °C for about 5

min and recorded the  $R_f$  values. The chromatogram obtained with powder test solution shows major  $R_f$  values under UV-254nm ~ 0.06, 0.175, 0.21, 0.30, 0.56 and after spraying at ~ 0.06, 0.175, 0.21, 0.30, 0.375, 0.50, 0.56, 0.93. The hydro-alcoholic extract test solution shows major  $R_f$  values under UV-254 nm at ~ 0.06, 0.175, 0.21 and after spraying at ~ 0.06, 0.175, 0.21, 0.375. Water extract test solution shows major  $R_f$  values under UV-254 nm at ~ 0.21 and after spraying at ~ 0.06, 0.21 **Fig. 5**.



**FIG. 5: THIN LAYER CHROMATOGRAPHY.** A: Powder ext., B: water ext., C: Wat. - Alc. ext. under UV254 nm; D: Powder ext., E: water ext., F: Wat - Alc. ext. after spraying with 10%  $H_2SO_4$ .

**CONCLUSION:** Agnimantha is an important Ayurvedic drug used in several Ayurvedic preparations. Studies carried out on the roots of Agnimantha - *Premna integrifolia* Linn. helps in the identification/authentication of different species of *P. integrifolia* and also different sources of Agnimantha. Since, agnimantha is also used under different botanical names like *Clerodendrum phlomidis* Linn. f., belonging to the same family Verbenaceae, this type of studies helps in differentiating the other sources of agnimantha, which will be more useful for researchers, students and Ayurvedic Physicians for identifying the correct drug and it may also be included in the Ayurvedic Pharmacopoeia of India.

**ACKNOWLEDGEMENT:** Authors are thankful to the Director General, CCRAS, New Delhi for

giving encouragement and facilities to carry out the work successfully.

**CONFLICT OF INTEREST:** Nil

#### REFERENCES:

1. Kirtikar KR and Basu BD: Indian Medicinal Plants. Lalith Mohan Basu, 49-Leader Road, Allahabad, India, Edition 2<sup>nd</sup>, Vol. 3, 1994; 1927-1929.
2. Kapoor LD: CRC Handbook of Ayurvedic Medicinal Plants- Herbal Reference Library, CRC Press, Boca Raton, London, Newyork, Washington DC, 2001; 70.
3. George KV, Samuel KA, Abraham J and George BP: Investigations on Bioactive compounds of *Premna integrifolia* Linn. Aryavaidyan 2003; 16(4): 234-239.
4. Hang NTB, Ky PT, Minh CV, Cuong NX, Thao NP and Kiem PV: Study on the chemical constituents of *Premna integrifolia* Linn. Nat Prod Commun 2008; 3(9): 1449-52.
5. Gokani RH, Lahiri SK, Santani DD and Shah MB: Evaluation of the immunomodulatory activity of *C. phlomidis* and *Premna integrifolia* root. International Journal of Pharmacology 2007; 3(4): 352-6.
6. Singh MP: Wild Medicinal Plants. Daya Publishing House, New Delhi, 2011; 228-9.
7. Sharma PV and Vijnana D: Chaukamba Bharati Academy, Varanasi, Edition Reprint, Vol. 2, 2009; 221.
8. Anonymous: The Ayurvedic Formulary of India. Department of Indian Systems of Medicine and Homoeopathy, Ministry of Health and Family Welfare, Govt. of India, Edition 2<sup>nd</sup> revised, Vol. 1, 2003; 1-488.
9. Anonymous. The Ayurvedic Formulary of India. Department of Indian Systems of Medicine and Homoeopathy, Ministry of Health and Family Welfare, Government of India, Vol. 2, 2000; 1-427.
10. Anonymous: The Ayurvedic Formulary of India. Department of Ayush, Ministry of Health and Family Welfare, Government of India, Vol. 3, 2011; 1-710.
11. Yadav D, Tiwari N and Gupta MM: Simultaneous quantification of diterpenoids in *Premna integrifolia* using a validated HPTLC method. J Sep Sci 2011; 34: 286-91.
12. Trease GE and Evans WC: Pharmacognosy. Elsevier Publications, Edition 15<sup>th</sup>, 2008; 513-548.
13. Anonymous: Quality Control Methods for Medicinal Plant Materials, World Health Organization (WHO), Geneva, 1998; 1-37.
14. Anonymous: The Ayurvedic Pharmacopoeia of India, CCRAS, Department of Ayush, M/o Health and Family Welfare, Govt. of India, Part-I, Vol. 8, 2011; 190-223.
15. Reddy PM, Rao RV, Shantha TR, Kumar KR, Shiddamallayya N and Bhat S. Phytochemical analysis and Thin Layer Chromatography of *Clausena dentata* (Willd.) Roem. Leaf. World Journal Pharmacy and Pharmaceutical Sciences 2016; 5(9): 1706-16.
16. Anonymous: Physicochemical standards of Unani formulations, Part-IV, Central Council for Research in Unani Medicine (CCRUM), Department of Ayush, M/o Health and Family Welfare, Government of India, New Delhi, 2006; 157-160.

#### How to cite this article:

Reddy MP, Shantha TR, Rao VR, Shiddamallayya N and Dixit AK: Pharmacognostical standardization on the roots of agnimantha - *Premna serratifolia* Linn. Int J Pharmacognosy 2018; 5(7): 426-30. doi link: [http://dx.doi.org/10.13040/IJPSR.0975-8232.IJP.5\(7\).426-30](http://dx.doi.org/10.13040/IJPSR.0975-8232.IJP.5(7).426-30).

This Journal licensed under a Creative Commons Attribution-Non-commercial-Share Alike 3.0 Unported License.

This article can be downloaded to **ANDROID OS** based mobile. Scan QR Code using Code/Bar Scanner from your mobile. (Scanners are available on Google Playstore)