



Received on 06 December 2017; received in revised form, 05 January 2018; accepted, 13 February 2018; published 01 April 2018

## PHYTOPHARMACOGNOSTICAL INVESTIGATION OF SAMASARKARA CHURNA

Vaishali D. Naphade<sup>\*1</sup>, Atul R. Bendale<sup>1</sup>, Sushil P. Narkhede<sup>1</sup>, Sachin B. Narkhede<sup>2</sup> and Anil G. Jadhav<sup>1</sup>

Sandip Institute of Pharmaceutical Sciences<sup>1</sup>, Nashik - 422213, Maharashtra, India.

Smt. B. N. B. Swaminarayan Pharmacy College<sup>2</sup>, Salvav (Vapi) - 396191, Gujarat, India.

### Keywords:

Samasarkara churna, Ayurvedic formulation, Phytopharmacognostical

### Correspondence to Author:

**Vaishali D. Naphade**

Sandip Institute of  
Pharmaceutical Sciences,  
Nashik - 422213, Maharashtra,  
India.

**E-mail:** vaishalinaphade587@gmail.com

**ABSTRACT: Introduction:** Samasarkara churna is the Ayurvedic medication preferred treatment of dyspepsia, loss of appetite and piles, formulated by mixing powder of cardamoms, long piper, black piper, flowers of *Mesua ferrea*, cinnamon and Sugar. **Method:** With the help of reported composition and standard procedure, formulated Samasarkara churna was compared with the market formulation. Efforts have been made to developed quality control parameters of Ayurvedic formulation Samasarkara churna by observing of organoleptic features, microscopical characters, and physicochemical properties. **Results:** Ash values and volatile oil content of standard and test sample were found to be 4.75, 2.25 and 0.2% w/v and 0.3% w/v respectively. Crude fiber content, pH of 1% w/v solution of churna and loss on drying were found to be (0.11, 0.34), (6.24, 6.29) and (0.7, 0.8) respectively. Calculated extractive values confirm that water-soluble contents are more in the Samasarkara churna. **Discussion:** After analyzing samples of Samasarkara churna by different parameters such as total ash, water, and alcohol soluble extractive values, lipid and volatile oil content, microscopic and phytochemical investigation showed reproducible results between batches. **Conclusion:** Parameters used therewith can be utilized for the evaluation and standardization of various polyherbal formulations.

**INTRODUCTION:** Indian healthcare consists of medical diversity, and Ayurveda remains prevailing compared to modern medicine, particularly for the treatment of a variety of chronic disease conditions<sup>1</sup>. To overcome the disease many Ayurvedic formulations are used like asava, arista, arka, avleha, kvatha, churna, lepa, vatika, gutika, netrabindu, sattva, grita, taila, bhasma, etc., but the churna has the unique place in all the formulation. Churna is the fine powder of drug and drugs intended for oral administration.

The World health organization (WHO) in 1999, has given a detailed protocol for the standardization of herbal drugs comprising of a single content, but very little literature is available for the standardization of polyherbal drugs. By considering the increasing demand for Ayurvedic formulations, proper documentation regarding their standardization is more important to assure the quality, purity, safety, and efficacy.

Keeping these things in mind, efforts have been made in developing quality control parameters for Ayurvedic formulation 'Samasarkara churna' using organoleptic features, microscopical characters, and physicochemical properties. It serves quality control and quality assurance aspects of the formulation. The standards of in house formulation of Samasarkara churna were determined and compared with market formulation<sup>2,3</sup>.

	<p><b>QUICK RESPONSE CODE</b></p>
	<p><b>DOI:</b> 10.13040/IJPSR.0975-8232.IJP.5(4).249-55</p>
<p>The article can be accessed online on <a href="http://www.ijpjournal.com">www.ijpjournal.com</a></p>	
<p><b>DOI link:</b> <a href="http://dx.doi.org/10.13040/IJPSR.0975-8232.IJP.5(4).249-55">http://dx.doi.org/10.13040/IJPSR.0975-8232.IJP.5(4).249-55</a></p>	

Based upon the composition given in the book of Bhasajyaratnavali, the formula of the Samasarkara churna is composed as in Fig. 1, as follows:

**MATERIAL AND METHODS:**

**Collection and Identification of Crude Drugs:**

All the plant crude drugs required for the preparation of the standard formulation of Samasarkara churna were collected from the local store in November 2015.

**Preparation of Churna:** All the crude drugs were examined for the presence of foreign matters and were weighed as prescribed under the formula of the Samasarkara churna in the book Bhasajyaratnavali. All of the drugs were separately

ground. All the powdered drugs were mixed using the homogenizer. One market formulation of Samasarkara churna was purchase from the local Ayurvedic pharmacy of town, details of market formulation is as follows: (Batch no. D-11 and mfg. Date: Nov. 14): The ingredients and their respective quantity; which is given on label: sunth (95.3 gm), long piper (5.9 gm), black piper (12 gm), lavang (5.9 gm), jayphal (5.9 gm), sugar (125 gm). All powdered crude drug ingredients; standard and market formulations of Samasarkara churna were examined for their morphological and microscopical characters and quantitative microscopical studies. That gives detail idea about Pharmacognostical evaluation<sup>4-10</sup>.

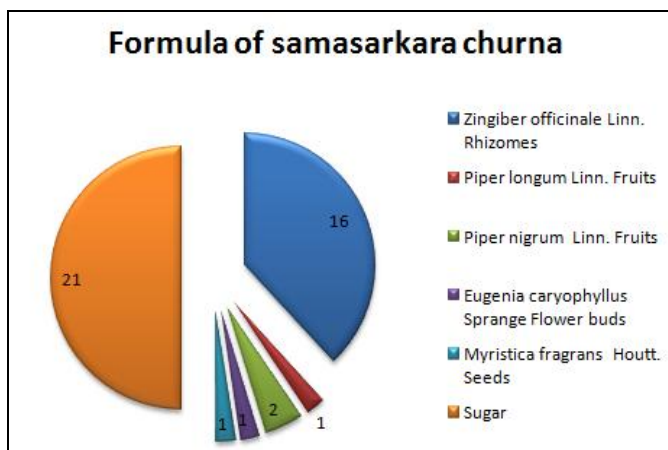


FIG. 1: FORMULA OF SAMASARKARA CHURNA

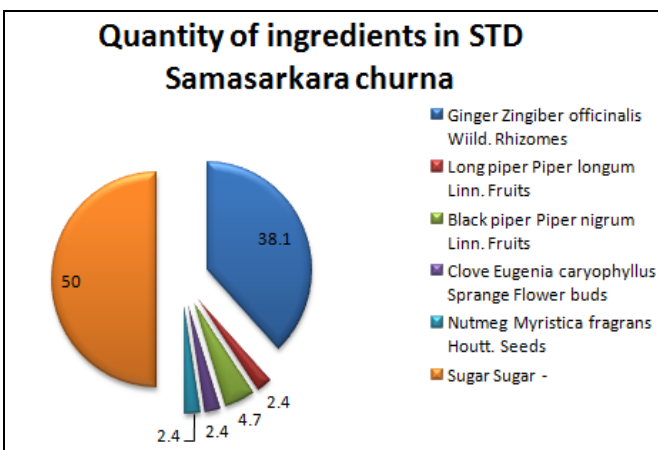


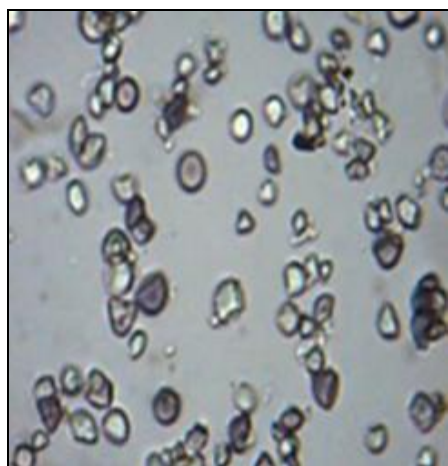
FIG. 2: QUANTITY OF INGREDIENTS IN STD SAMASARKARA CHURNA<sup>4</sup>

**Phytochemical Evaluation:** Organoleptic characters, loss on drying, ash value, water-soluble

extract, alcohol soluble extract, and pH in 5% aqueous suspension were assessed<sup>11-13</sup>.

**OBSERVATIONS AND RESULTS:**

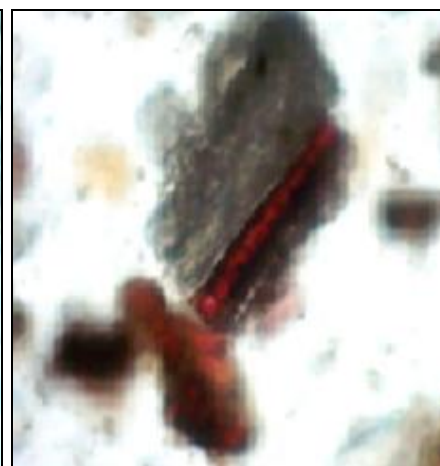
**A) Microscopy of Standard Samasarkara Churna:**



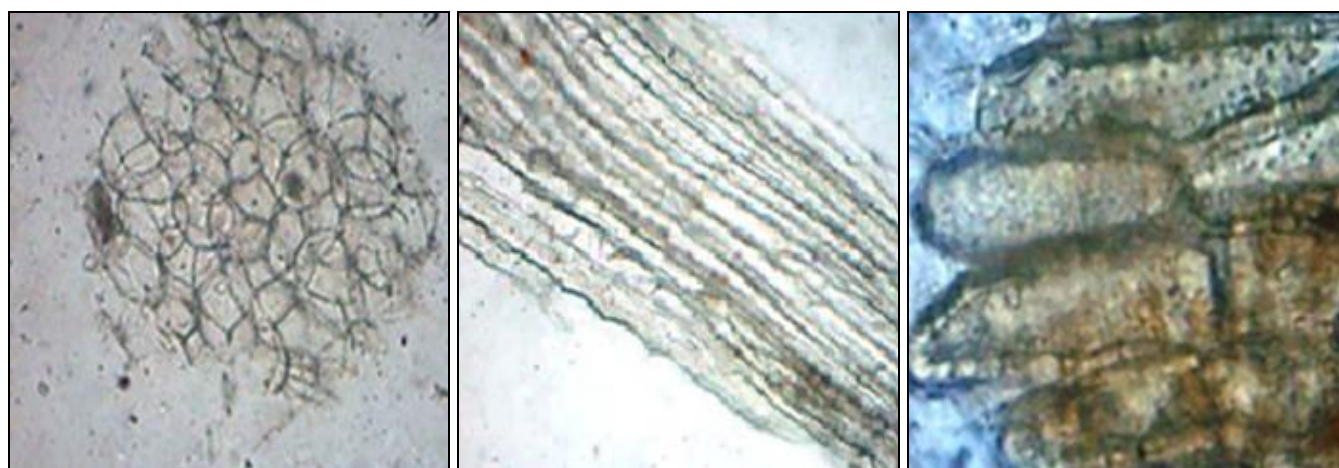
A: STARCH GRANULES



B: STONE CELLS



C: XYLEM VESSELS



**D: PARENCHYMA**

**E: FIBER**

**F: SCLERIDE**

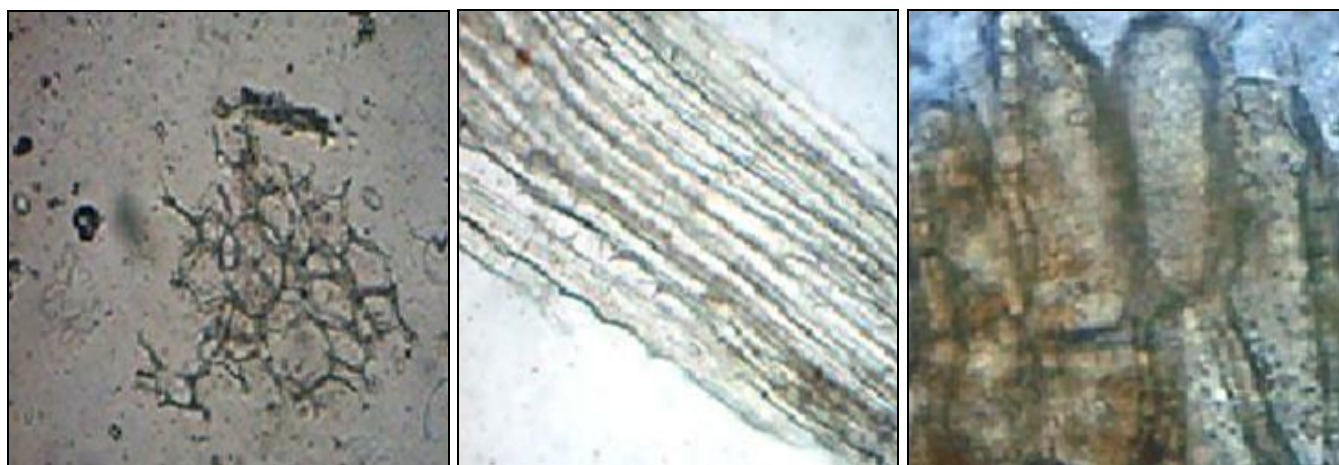
**B) Microscopy of Test Samasarkara Churna:**



**A: STARCH GRANULES**

**B: STONE CELLS**

**C: XYLEM VESSELS**



**D: PARENCHYMA**

**E: FIBER**

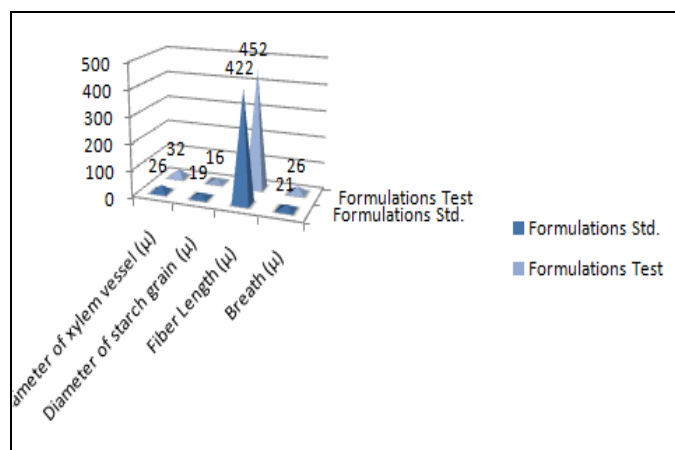
**F: SCLERIDE**

**TABLE 1: MORPHOLOGICAL CHARACTERS OF STANDARD AND MARKET FORMULATIONS OF SAMASARKARA CHURNA**

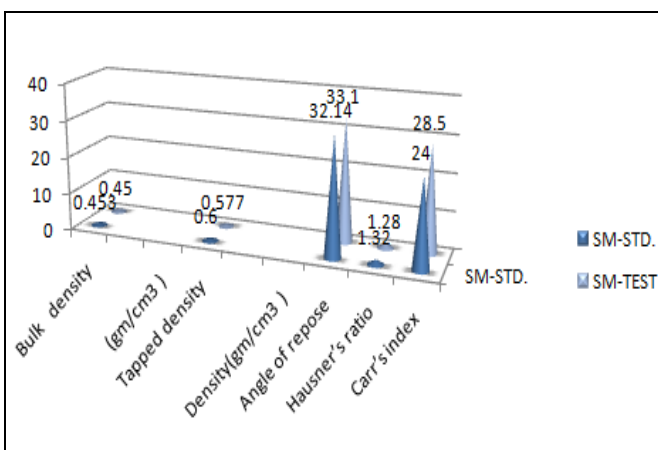
Parameters	Formulations	
	Std.	Test
State	Fine	Very fine
Color	Creamish brown	Brown
Odor	Aromatic and pungent	Aromatic and pungent
Taste	Aromatic and sweet	Aromatic and sweet

**TABLE 2: SCREENING OF PHYTOCONSTITUENTS IN STANDARD AND MARKET FORMULATIONS OF SAMASARKARA CHURNA**

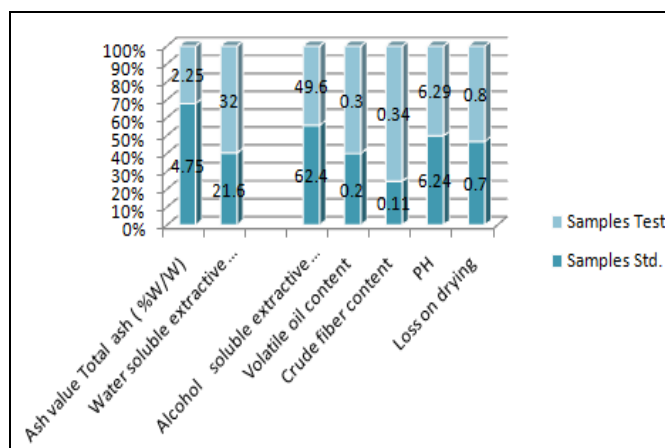
Phyto-constituents	Formulations	
	Std.	Test
Alkaloids	+	+
Anthraquinone Glycosides	-	-
Phenolics	+	+
Carbohydrates	+	+
Flavonoids	+	+
Tannins	+	+
Saponins	-	-
Coumarin s	-	-



**FIG. 3: QUANTITATIVE MICROSCOPICAL MEASUREMENTS OF STANDARD AND MARKET FORMULATIONS OF SAMASARKARA CHURNA**



**FIG. 4: PHYSICAL CHARACTERISTICS OF SAMASARKAR CHURNA**



**FIG. 5: PHYSICOCHEMICAL PARAMETERS OF STANDARD AND MARKET FORMULATIONS OF SAMASARKARA CHURNA**

**TABLE 3: ESTIMATION OF PHYTOCONSTITUENTS IN STANDARD AND MARKET FORMULATIONS OF SAMASARKARA CHURNA**

Phyto-constituents	Formulations	
	Std.	Test
Total tannin content (% w/w)	1.6	1.7
Total flavonoid content (% w/w)	0.236	0.254
Na <sup>+</sup> ion salts (% w/w)	0.9	1.1
K <sup>+</sup> ion salts (% w/w)	1.2	1.4

**TABLE 4: FLUORESCENCE ANALYSIS OF STD AND MKT FORMULATIONS OF SAMASARKARA CHURNA**

Treatment of Powder	Std. Formulation		Test Formulation	
	Daylight	UV light	Daylight	UV light
1N HCl	PY	FLG	YBR	FG
1N H <sub>2</sub> SO <sub>4</sub>	PY	FLG	YBR	FLG
1N HNO <sub>3</sub>	PY	FLG	YBR	FG
1 N NaOH (aq.)	RBR	FG	BR	FDG
1N NaOH (alcoholic)	YBR	FDG	BR	FDG
I <sub>2</sub>	GBR	FDG	GBR	FDG
KOH	YBR	FG	RBR	FG
NH <sub>3</sub>	YBR	FG	RBR	FDG

PY-pale yellow, YBR- yellowish brown, GBR- greenish brown, RBR-reddish brown, BR- brown, FLG- fluorescence light green, FG- fluorescence green, FDG- fluorescence dark green.

**TABLE 5: CONTENT AND DETAILS OF CHURNA** <sup>14-35</sup>

Botanical name	Family	Taxonomy		Vernacular name	Distribution	Chemical Constituents	Medicinal Properties and uses	
Ginger <i>Z. officinale</i> Wild	Zingiberaceae	Kingdom	Plant	Sans.	Ardra, Sunthi	West Indies, India, Nigeria, and West Africa. Madras Cochin, Travancore, somewhat less extent in Bengal and Punjab	Gingerol, fats and waxes, volatile oil Contains zingiberene, β- sesquiphellandrene, and arcurcumene	Thermogenic, carminative, laxative, digestive, emollient, appetizer, stoma-chic, expectorant, anthelmintic, anti-ulcer, antifungal useful in asthma, cough, diarrhea, cholera, nausea, vomiting
		Division	Phanerogams	Eng.	Ginger			
		Sub division	Angiosperm	Hin.	Adrak, Sunth			
		Class	Monocotyledons	Guj.	Sunth, Adu			
		Order	Scitamineae	Ben.	Adu			
		Species	Officinale	Tam.	Allamu, Sunti			
Black Piper <i>P. nigrum</i> Linn.	Piperaceae	Kingdom	Plant	Sans.	Milagu	South Africa, Indonesia, Brazil, Malasia, and Sri Lanka, In india cultivation and collection carried out in Kerala, Karnataka, and Maharashtra	Piperine, volatile oil contains l- phellandrene, caryophyllene, limonene, sabinene, β/ α-pinene, myrcene, p- cymene	Aromatic, stimulant, stomachic and carminative, oil can be used to help in the treatment of pain relief, rheumatism, chills, flu, colds, increase circulation, exhaustion, muscular aches
		Division	Phanerogams	Eng.	Black pepper			
		Sub division	Angiosperm	Guj.	Golmirch			
		Class	Dicot	Tam.	Maricha			
		Subclass	Archichlamydeae	Beng.	Golmorich			
		Order	Piperales					
		Genus	<i>Piper</i>					
		Species	<i>nigrum</i>					
Long Piper <i>P. longum</i>	Piperaceae	Kingdom	Plant	Eng.	Long pepper	Indonesia, India and the Philippines. piperlongum is available in Tamil Nadu, Andhra Pradesh and Kerala states	Volatile oil piperine, piperattine resin, piperidine and starch, volatile oil contains l-phellandrene and caryophyllene	Immunomodulating, antiallergic, antiasthmatic, fruits are used as aromatic, stimulant, stomachic and carminative
		Division	Phanerogams	Hin.	Pippal			
		Sub division	Angio-sperm	Sans.	Pippali			
		Class	Dicot	Guj.	Pippal			
		Subclass	Archichlamydeae					
		Order	Piperales					
		Genus	<i>Piper</i>					
		Species	<i>longum</i>					
Clove <i>E. caryophyllus</i> Sprange	Myrtaceae	Kingdom	Plant	Sans.	Lavangaha	Zanzibar, Pemba, Madagascar, Carribian islands, Sri Lanka. In India, cloves are grown jn Nilgiri, Tenkasi hills and Tamil Nadu	Volatile oil, tannins, various triterpene acids and esters, and glycosides, eugenol, iso- eugenol, farnesol, nerolidol, sitosterol, and campesterol	Potential anticarcinogenic, used as a dental analgesic, flavoring agent, antiseptic and carminative. The oil is used in perfumery and in the preparation of vanillin
		Division	Phanerogams	Eng.	Clove			
		Subdivision	Angio-sperm	Hin.	Laung			
		Class	Dicot	Guj.	Laving			
		Subclass	Archichlamydeae	Ben.	Lavang			
		Order	Myrtiflorae	Tam.	Lavanga- patti			
		Genus	<i>Eugenia</i>					
		Species	<i>caryophyllus</i>					
Nutmeg <i>M. fragrans</i> Houtt.	Myristicaceae	Kingdom	Plant	Sans.	Jatiphalam	Indonesia, Malasia and Carribian islands, in India it is cultivated in Kerala, Tamil Nadu	Volatile oil, fat, phytosterin, starch, amyloextrin, coloring matter, and saponin	Used as aromatic, stimulant and carminative, used in soap industries, the treatment of infantile diarrhea
		Division	Phanerogams	Mar.	Jayphal			
		Subdivision	Angio-sperm	Hin.	Jayphal			
		Class	Dicot	Guj.	Jayphal			
		Subclass	Archichlamydeae	Ben.	Jayphal			
		Order	Magnoli-ales	Tam.	Jajikaya			
		Genus	<i>Myristica</i>					
		Species	<i>fragrans</i>					

**DISCUSSION & CONCLUSION:** Samasarkara Churna; an Ayurvedic formulation has been standardized by the intervention of contemporary scientific quality control actions in the traditional research described in conventional texts. Pharmacognostic appeals established for the raw materials could be employed as Q.C. standards for evaluating its identity and can be used for repetitive analysis. Purity and potency of the materials and formulations; following the procedure given could be performed in QC/QA laboratory of a pharmaceutical firm. In the present study, two different polyherbal formulations of Samasarkara churna was taken, and they were evaluated as per Indian Pharmacopoeia and WHO guidelines for their different properties like - organoleptic, extractive values (alcohol and water), Ash values (Total ash), physical characteristics (tapped and bulk density, Hausner's ratio and Carr's index), phytochemical evaluation, fluorescence analysis. Organoleptic studies revealed that altogether batches (Standard and Test) of Samasarkara Churna were brown with a pungent odor and sweet taste. More than 90% of these samples (Standard and Test) passed through 60- mesh sieve.

The extractive values (% w/v) of Samasarkara Churna (std. and test) in water and alcohol were found to be (62.4%, 49.6%); (21.6%, 32%); respectively, **Fig. 5** it confirms that water-soluble contents are more in the Samasarkara churna. Ash values (% w/w) of Samasarkara churna (std. and test) were found to be 4.75 and 2.25 respectively and volatile oil content of std. and test for mutations were found to be 0.2% w/v and 0.3% w/v respectively. And as per **Table 2** crude fiber content, pH of 1% w/v solution of churna and loss on drying were found to be (0.11, 0.34), (6.24, 6.29) and (0.7, 0.8) respectively.

The data of **Table 5** shows that; physical characteristics of Samasarkara Churna like-Bulk density (g/ml), tapped density (g/ml), angle of repose, Hausner's ratio and Carr's index is found to be (0.453,0.45); (0.6,0.577); (32.14, 33.10); (1.32, 1.28); (24, 28.5) respectively. Low values of angle of repose show the poor flowability for all samples. As per **Table 5**; UV light and fluorescence were observed in both of the std. and test formulation. It is clear from **Table 3** that active constituents like glycosides, carbohydrates, steroids, tannins, and

saponins are present and the total tannin content in Samasarkara churna (std. and test) was found to be 1.6 and 1.7 %w/w respectively. Total flavonoid content estimated for both std. and Test Samasarkara churna which were found to be 0.236 and 0.254% w/w respectively. Na<sup>+</sup> ion salts and K<sup>+</sup> ion salts were quantified which were found to be (0.9, 1.1% w/w) and (1.2, 1.4% w/w) respectively.

After analysis of a sample of Samasarkara churna by different parameters such as total ash, insoluble acid ash, water-soluble extractive, alcohol-soluble extractive, lipid content, volatile oil content, and microscopic analysis, the phytochemical analysis showed reproducible results between batches. So it can be concluded that these parameters can be used for the evaluation of Samasarkara churna. The same protocol may be applied for as regular quality control and standardization for various polyherbal formulations

**SUMMARY:** Two consignments of different polyherbal formulation Samasarkara churna which purchased from the local market were evaluated as per Indian Pharmacopoeia and WHO guidelines. Different parameters like - organoleptic characteristics, extractive value, ash value, physical characteristics, phytochemical evaluation, fluorescence analysis, pH value, *etc.* were evaluated and compared. The result of Samasarkara churna was found nearby. This study on Samasarkara churna was precise, reproducible and may be considered as a protocol for its evaluation. Present methods can draw a parallel for evaluation for other Ayurvedic formulations. The same protocol may be applied for as regular quality control and standardization for polyherbal formulations like churna.

**ACKNOWLEDGEMENT:** Nil

**CONFLICT OF INTEREST:** Nil

**REFERENCES:**

1. Patwardhan B, Vaidya A and Chorghade M: Ayurveda and natural products drug discovery. *Current Science* 2004; 86(6): 789-99.
2. Waxler M: Plural medicine in India and Sri Lanka: do Ayurvedic and Western medical practices differ. *Soc Sci Med* 1988; 27: 531-544.
3. Ray DR: *Ayurdiya Kriyasharir*, Sh. Vednath Ayurved Bhawan Ltd, Edition I<sup>st</sup>, 1953; 547-675.
4. Vaidhya PL: *Ayurved kamahangranth Shree Bhishjyarnavali*, Savitri thakur prakashan, Varanasi, 169.

5. Raval MK, Shah VK, Zalavadia VI, Seth NR, Dudhrejiya AV and Golawala K: Standardization and assessment of preformulation parameter of rasayana tablet. *International J of Pharmaceutical Science and Drug Res* 2010; 2(1): 58.
6. Jain S, Koka S, Gupta A, Barik R and Malavia N: Standardization of Chopchiniyadi churna: An Ayurvedic formulation. *Journal of Pharmacognosy* 2010; 2(5): 60.
7. Kokate CK, Purohit AP and Gokhle SB: *Pharmacognosy Nirali prakashan*, Mumbai, Edition 39<sup>th</sup>, 2007: 566-571.
8. Pattnayak P, Hardel DK and Mahapatra P: Standardization of Vaisvanara churna: A Polyherbal formulation. *Journal of Pharmacognosy* 2010; 2(5): 50.
9. Vaidhya PL: *Shree Bhaisajyaratnavali*. Savita Prakashan. 179.
10. Kokate CK, Purohit AP and Gokhle SB: *Pharmacognosy Nirali prakashan*, Mumbai, Edition 39<sup>th</sup>, 2007: 408.
11. Evans WC: *Trease and Evans Pharmacognosy*, Elsevier, a reed Elsevier India Pvt Ltd., Edition 15<sup>th</sup>, 2005: 20-30.
12. *Indian Medicinal Plants*. International Book Distributor, Dehradun, Edition 2<sup>nd</sup>, 1999; 4: 2435.
13. Kokate CK, Purohit AP and Gokhle SB: *Pharmacognosy Nirali Prakashan*, Mumbai, Edition 39<sup>th</sup>, 2007: 409
14. Wallis TE: *Text Book of Pharmacognosy*, CBS Publication, Delhi, Edition 5<sup>th</sup>, 2005; 392.
15. *Indian Medicinal Plants*. International Book Distributor, Dehradun, 3122 Anonymous. *Indian Herbal Pharmacopoeia Revised new edn*, Published by Indian drug manufacturer's association: Mumbai, 1999, Edition 2<sup>nd</sup>, Vol. III, 2002; 439.
16. Evans WC: *Trease and Evans Pharmacognosy*, W. B. Saunders: London, Edition 15<sup>th</sup>, 2002; 27.
17. Ratnam V: *Indian medicinal plants, a compendium of 500 species*, Orient Longman, P.S. Varier's Aryavaidyasala: Kottakal, 1996; 5: 263.
18. Handa SS and Kapoor VK: *Pharmacognosy*, Vallabh Prakashan: Delhi; 115 Basu BD. (1975) *Indian Medicinal Plants: Plates. Part-II, M/S Periodical Experts: New Delhi* 1989; 413.
19. Kirtikar KR and Basu BD: *Indian Medicinal Plants*. Lalit Mohan Basu Prakashan: Allahabad, India. Edition 2<sup>nd</sup>, Vol. II, 1975: 1020-1023.
20. Anonymous. *Pharmacopoeia of India*, Ministry of health and family welfare, Government of India: New Delhi 1966; 471.
21. Anonymous. *The Ayurvedic Pharmacopoeia of India, Part-I*, Govt. Of India, Ministry of health and family welfare, Dept. of health: New Delhi, Edition 1<sup>st</sup>, 1986; 1: 47-48.
22. *The Wealth of India: National Institute of Science Communication and Information Resources*, New Delhi, Edition 1<sup>st</sup>, 2004; 4: 319.
23. Evans WC: *Trease and Evans Pharmacognosy*. Elsevier, a reed Elsevier India Pvt Ltd., Edition 15<sup>th</sup>, 2005; 353-354.
24. *Indian Medicinal Plants*. International Book Distributor, Dehradun, Edition 2<sup>nd</sup>, 1999; 3: 3128.
25. *The Wealth of India: National Institute of Science Communication and Information Resources*, New Delhi, Edition 1<sup>st</sup>, 2004; 4: 318.
26. Evans WC: *Trease and Evans Pharmacognosy*. Elsevier, a reed Elsevier India Pvt. Ltd., Edition 15<sup>th</sup>, 2005; 353-354.
27. Bhaskaran S: *Physical Pharmaceutics*. Birla Publication Pvt. Ltd., Delhi, Edition 1<sup>st</sup>, 2006-07: 107.
28. Lachman L and Lieberman HA: *Theory and Practice of Industrial Pharmacy*, Indian Edition, CBS Publication and Distributors, New Delhi, 2009; 67-68.
29. Subramanyam CVS and Vasanthraju SG: *Laboratory Manual of Physical Pharmacy*, Vallabh Prakashan, New Delhi, Edition 2<sup>nd</sup>, 2005: 65-67.
30. *The Ayurvedic Pharmacopoeia of India, Part: I*, Published By Controller of Publication, Delhi, Edition 1<sup>st</sup>, 2: 190-191.
31. Jain S, Koka S, Gupta A, Barik R and Malavia N: Standardizations of Chopchiniyadi churna: An Ayurvedic formulation. *Journal of Pharmacognosy* 2010; 2(5): 61.
32. Khandelwal KR: *Practical Pharmacognosy technique and experimental*, Edition 5<sup>th</sup>, 2007: 149-153.
33. Kokate CK, Purohit AP and Gokhle SB: *Pharmacognosy Nirali Prakashan*, Mumbai, Edition 39<sup>th</sup>, 2007: 461.
34. Winter CA, Risley EA and Nuss GW: *Proc Soc Exp Biol Med* 1962; 111: 544-547.
35. Pattnayak P, Hardel DK and Mahapatra P: Standardization of Vaisvanara Churna: A Polyherbal formulation. *Journal of Pharmacognosy* 2010; 2(5): 52.

**How to cite this article:**

Naphade VD, Bendale AR, Narkhede SP, Narkhede SB and Jadhav AG: Phytopharmacognostical investigation of Samasarkara churna. *Int J Pharmacognosy* 2018; 5(4): 249-55. doi link: [http://dx.doi.org/10.13040/IJPSR.0975-8232.IJP.5\(4\).249-55](http://dx.doi.org/10.13040/IJPSR.0975-8232.IJP.5(4).249-55).

This Journal licensed under a Creative Commons Attribution-Non-commercial-Share Alike 3.0 Unported License.

This article can be downloaded to **ANDROID OS** based mobile. Scan QR Code using Code/Bar Scanner from your mobile. (Scanners are available on Google Playstore)